



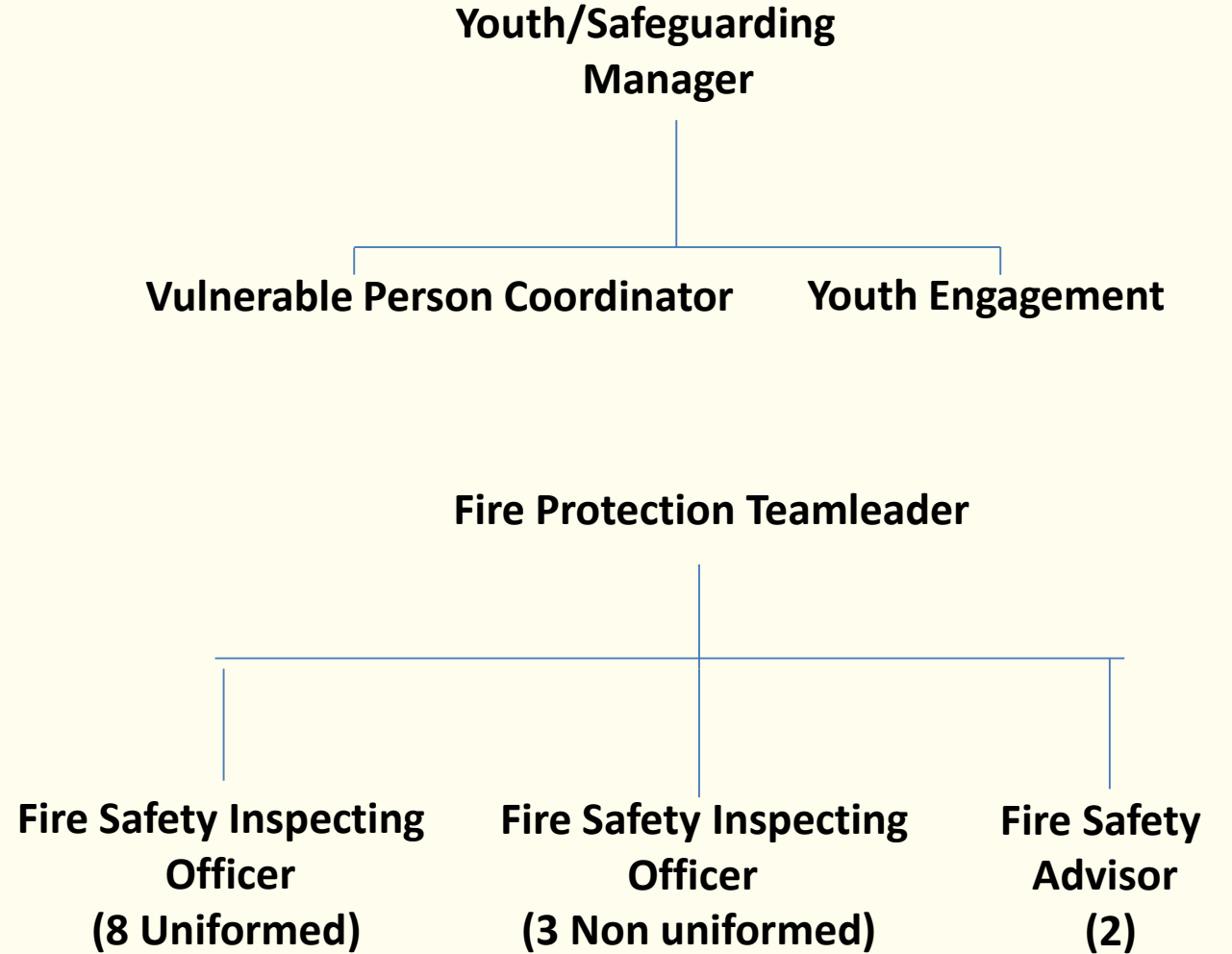
Community Safety

Protection

Prevention

**LEICESTERSHIRE
FIRE and RESCUE SERVICE**

Department Overview



2

What we do...

Prevention

- Deliver School Education Programme to years 1 and 5 Road Safety year 11
- Post Incident Response to serious or fatal fire
- When possible support stations at events/local initiatives
- Primarily work with the 'most vulnerable' in the community
- A tailored Home Safety Check (HSC) including Falls
- Fire safety talks to local community groups
- HSC 'Extra Mile'
- Road Safety

Protection

- Fire Safety Audits – High Risk Premise
- Business Engagement

Performance and Achievements

2018-19



Safer Communities

Prevention



4,790
smoke
alarms
fitted



6,746
Home Fire
Safety Checks



1,068
community
safety events

19,093
people engaged
in road safety



We carried out:

421

fire safety
advice
requests

550

fire safety
concerns

924

building
regulations
inspections

444

fire
safety
audits



226
licensing
consultations



161
specific
inspections



53
desk-based
inspections



Protection



Response



8,666
emergency incidents

3,020

fire alarms

2,569

fires

2,315

special services

762

road traffic collisions

19,156
emergency
999 calls
answered



We attended:



95.5%
of life
threatening
incidents
within 10
minutes



99.5%
of non-life
threatening
incidents
within 20
minutes



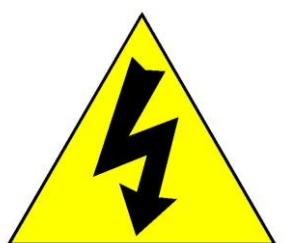
99%

rated the service they received as 'satisfactory' or better.

What is a Home Safety Check (HSC)



- A free safety talk in your home
- Delivered by
 - A member Leics Fire and Rescue Service
 - Community Educators
 - Operational firefighters
 - External partners
- Tailored to the person / behaviour / environment / risks in the home
- Will take as long as it takes!
- May include the installation of safety devices
- May include the need to refer to other partner agencies for further support



Warm
homes



How to request a Home Safety Check

<http://www.leicestershire-fire.gov.uk/>

LEICESTERSHIRE

FIRE and RESCUE SERVICE *protecting our communities*

Home Fire Safety Check

What is a home fire safety check?

This is a service which offers you advice on how to prevent fires and what to do in the event of a fire. It is carried out by Leicestershire Fire & Rescue Service and its partners and takes place at your home, lasting approximately 30 minutes. As part of this service, smoke alarms may be fitted and subsequent maintenance and replacement of these becomes the responsibility of the homeowner. Smoke alarms are not provided as a matter of course.

Who is eligible?

We only target our visits at people and places where we know there is a higher risk of fire. The information supplied in the application process will

Partner agency

Partner Agency Request

Use this form to request a visit from Leicestershire Fire and Rescue Service to a person's home, to offer advice on how to make fire. Alternatively, [click here](#) to be taken back to the main data submission portal.

Request details *

Please select one

Referrer/Occupant Details

Assessment

Please answer the following series of questions based on the person/property where the home fire safety check will be conducted.

Is the client a single parent with dependent children? *

Please select one

Is the client or anyone living with the client aged over 75? *

Please select one

Does the client or anyone living with the client have hearing difficulties? *

Please select one

Does the client or anyone living with the client have difficulties with sight? *

Please select one

Does the client or anyone living with the client smoke more than 15 times per day? *

Please select one

Is the client or anyone with the client known to be a problem drinker or substance user? *

Please select one

Does the client suffer from a mental health condition? *

Please select one

Is the client or anyone living with the client on medication that causes drowsiness? *

Please select one

Is the client or anyone living with the client subject to a recent arson threat? *

Please select one

First Contact Plus

Home | About Us | Our Services | Partner Resources | Partner Login

Search...

Your First Contact for Information Advice and Support in Leicestershire

North West Leicestershire | Charnwood | Melton
Hinckley & Bosworth | Blaby | Oadby & Wigston
Harborough

Improving Your Health > Falls > Feeling Safe > Living Independently >

Falls – What do we look for ?

LISTEN – Do they have a fear of falling / slipping or difficulty in getting around / are they getting out?

OBSERVATION – do they shuffle / problem with balance / Struggle to get out of the chair?

Clutter

Broken mobility equipment

Poor lighting

Worn carpets

Pendant alarms / lifelines not working

Lift / elevator access

Trailing flexes and electrical leads

Loose or missing bannisters or handrails on the stairs

Unsafe / unsteady furniture

Steep steps to access the property

Alcohol

Worn out slippers

Loose rugs, mats, bathroom mats

Stock piles medication

Working in conjunction with the CCG the team can complete an EFRAT or MFRAT
in order to refer the individual

Safety Devices...

- Deaf alarms
- Promote Emergency SMS
 - www.emergencysms.org



Contact **999**
by SMS text

If you cannot make voice calls, you can now contact the **999 Emergency Services** by SMS text from your mobile phone

A stylized illustration of a hand holding a black mobile phone, with the hand's fingers positioned over the keypad. The background is a solid red color.

- Letter box jammers
- Window alarms



- Smoke alarms
- Carbon monoxide detectors



Hoarding



1

2

3



4

5

6



7

8

9



6

Hoarding

The Engagement problem

- The hoarder may have care needs
- There may be neglect or self neglect
- There may be mental health needs
- Greatly increased risk of fire and fatalities Fire Service Access
- Increased risk to other tenants, increased risk to the property from fire damage and neglect
- Adult Social Care –Ensuring care needs are met Police ASB issues with the hoarder as a victim or perpetrator
- GP Mental and physical wellbeing of their patient
- Hospitals Cost of trips and falls over clutter

There is an assumption to be made that the best person to judge an individual's well being, is the individual themselves (Care Act Part 1(3)(a))

Youth Engagement

Firecare

Free of charge service aimed at early Intervention for young people 3 – 17 years who set fires or play with fire

Fire Skills

Dependent on external funding, commissioned by schools, local councils etc. Approx. (max) £1600 per course for up to 14 young people

30 hour experience (can be delivered very flexibly, over at least 5 days) consisting of basic fire-fighting drills such as hose-running and pitching ladders mixed in with “classroom” session on arson/ hoax calls/ first aid.

Fire Cadets

Weekly 2 hour after-school sessions open to all young people aged 13 – 17 years.

Links into the new government-backed National Fire Cadets model, focusing on community action and volunteering.

Central Western Market Harborough Stations

VF4 Car and Wasted Lives Roadshow Fatal Four



Wasted Lives Roadshow

Fatal Four



- Schools colleges and young people presentation
- 14-24 years old
- Seatbelts, Mobile Phones, Speeding, Drink and Drugs
- Real life case studies
- Passenger responsibility

13

360 VR Goggles Road Safety Story



Biker Down and Fire Bike



- Focus on “born again bikers”
- First aid at scene of an incident
- Science of being seen
- Attending Biker events
- Courses free to general public
- Currently running 1-2 a month

Thank you
Any questions?

